

User Name:

Password:

WiFi Password:

---

### First Time Setup of iPads

1. Install SkyCoach app on all iPads
  - a. Login to SkyCoach app while connected to the internet on all iPads
2. Go to SkyCoach menu->settings->
  - a. Change network mode from cloud to client
  - b. Change officials mode to on
  - c. Change download while recording to on *[if you clip plays from the official's iPad]*
  - d. Change auto record to on *[Basketball Only]*

### Camera Settings

3. Make sure the cameras have the HDMI output resolution set to 1080p
    - a. OR use a converter to provide HDMI 1080p to the remote camera kit
- 

### Game Setup

[Training Video Playlist](#)

### Review Station Steps

1. Plug in the host box
  - a. Point the red/black stickered antenna at the press box red/black antenna
  - b. Point the red/white stickered antenna at the end zone red/white antenna
  - c. Place the Review AP near the review station and point at your review iPad
  - d. Connect the review iPad via ethernet adapter to the white router
    - i. Or Connect review iPad to SC-Review-XXXXXX WiFi (ethernet is better)

### Camera Station Steps (Repeat for PressBox and EndZone)

2. Plug in power tube
    - a. Point the stickered antenna at the matching review station stickered antenna
  3. Plug in camera station remote camera kit(s)
    - a. Connect the remote camera kit(s) to the RCK Only ethernet cable(s)
    - b. Attach end zone camera(s) HDMI to the HDMI IN on remote camera kit(s)
- 

### iPad Steps

1. Login to SkyCoach on iPad
  - a. Verify iPad shows connected to 192.168.88.9 in bottom right of screen
  - b. Create an event on ONE iPad
  - c. Open the event on ALL iPads before the game
2. DO NOT close the app or lock the iPad during the game

### Recording Steps

3. Join and open the event on remote camera kit(s)
  4. Press start/stop on ONE of the remote camera kits to start/stop all camera angles and ODK
    - a. OR use a remote control iPad to start/stop recording and tag more data
-

**HOST BOX: 2 bridge antennas, 1 mesh access point**



\*The network diagram on the last page details where the cables are plugged

**Review Station & Setup**

[\(click here for video\)](#)



\*The host box will be at the review station

\*Review station antennas should not cross each other's path and should have a clear and straight line of sight to their counterparts

\*Keep your official's review iPad protected from the elements



**STATION BOX:** 2 RCKs, 2 antennas, 2 powertubes

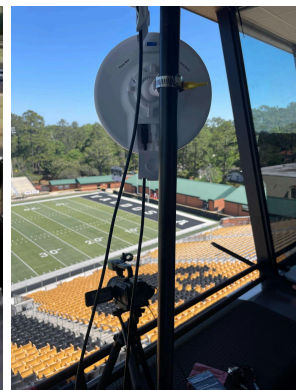


### Camera Station Setup

\*Camera stations have the same setup no matter the sport

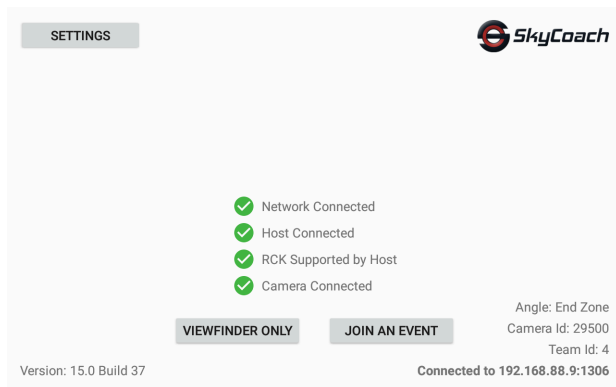
\*Be sure the antenna has a clear line of sight to the press box antenna

[\(click here for video\)](#)

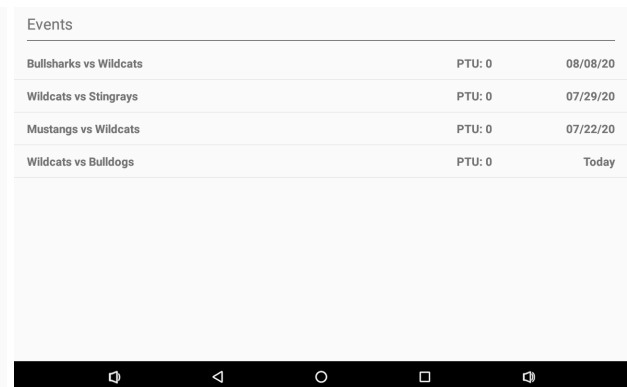


## RCKs - Remote Camera Kits

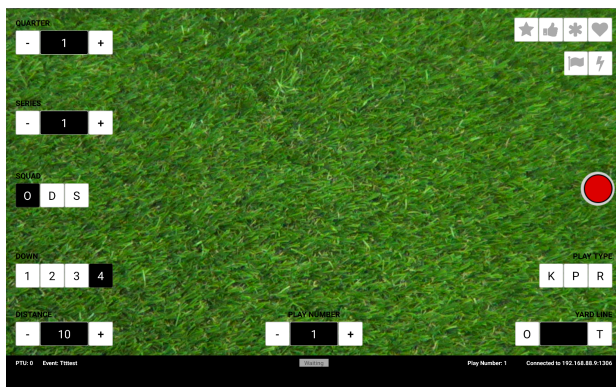
\*Each RCK will receive its hdmi signal from each of the cameras and connect to the ethernet cables labeled 'RCK Only'



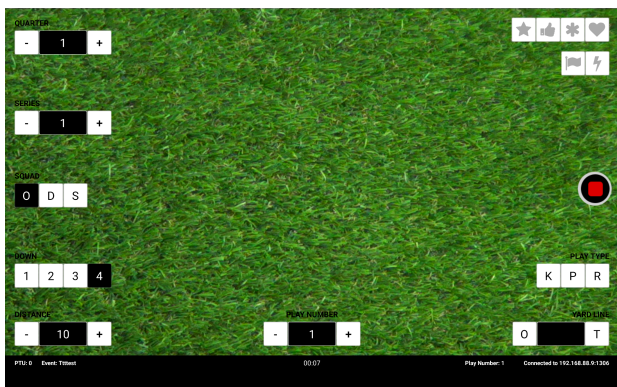
\*select JOIN AN EVENT



\*select the correct event for TODAY



\***Waiting** to start recording, so press the red circle



\*select O,D, or S **before** you click the square to stop recording

\*The pictures on this sheet are to be used as a guide. Training will confirm positions and locations.

**SCAN BELOW** or [CLICK HERE](#)  
for more detail and latest instruction set

