

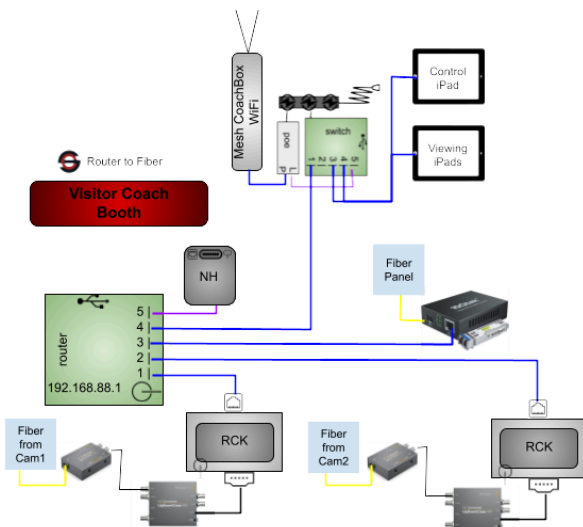
SkyCoach Capture in Coach Room using Fiber

Visiting Coach Room

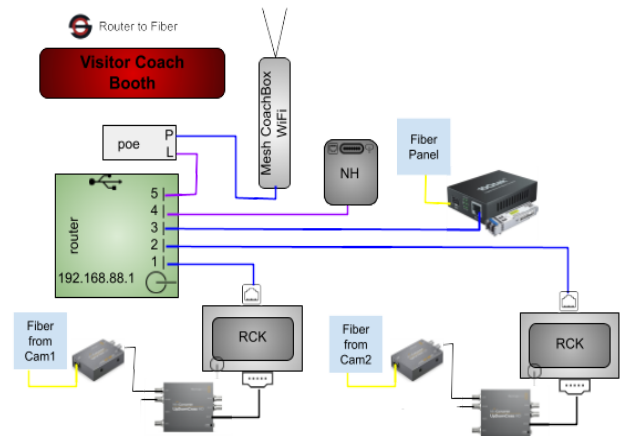
Power the Host Box, Coach Box, and both Remote Camera Kits (RCK) in the coach room.

1. Prepare Router for RCK Connections
 - a. Disconnect the SkyCoach antennas from the Host Box
 - b. Disconnect the POE injectors ethernet cable from the router to open ports for the RCKs
2. Camera Feed Connections
 - a. Connect fiber patch panel camera feeds to the fiber to SDI converters, Blackmagic Optical Fiber Converter.
 - i. Use the ST connector for the fiber patch panel and LC connector for the converter
 - b. Connect the fiber to SDI converters SDI out to the UpDownCross converters SDI in
 - c. Connect the UpdownCross converters HDMI out to the RCKs HDMI in
 - d. Connect the RCKs to the Host Box router via ethernet
3. Coach Room to Sideline Connection
 - a. Connect the coach room fiber patch panel sideline port to the fiber to ethernet converter
 - i. Use the ST connector for the fiber patch panel and LC connector for the converter
 - b. Connect the fiber to ethernet converter ethernet port to the Host Box router
 - i. Do not plug in to a POE injector
4. Coach Box WiFi Connection
 - a. Option 1 - Connect the Host Box router to the Coach Box Switch
 - b. Option 2 - Connect the Coach Box WiFi antenna to the POE port on one of the Host Box POE injectors
 - i. The POE injector used must be connected to the router from injector LAN port

Option 1 Coach Box Diagram - Antenna Connected to Coach Box



Option 2 Coach Box Diagram - Antenna Connected to Host Box



Camera Locations

1. Connect the camera to the fiber to SDI converter using SDI
 - a. If using home team's camera, you will need to bring an SDI splitter or ask them to split for you
2. Connect the fiber to ethernet converter to the patch panel
 - a. Use the ST connector for the fiber patch panel and LC connector for the converter

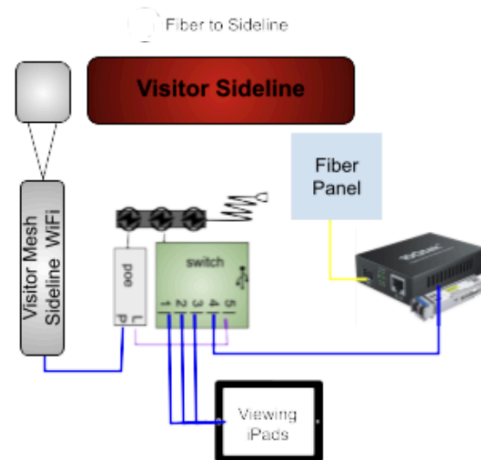
Visiting Sideline

1. Connect the sideline fiber patch panel port to the fiber to ethernet converter
 - a. Use the ST connector for the fiber patch panel and LC connector for the converter
2. Connect the fiber to ethernet converter to the SkyCoach switch
 - a. Do not connect it to the the POE injector
 - b. Use a long ethernet cable to get the Sideline Box closer to the team area
 - c. Use a long power extension cord to reach the Sideline Box to power it

Camera Location Diagram



Sideline Diagram



Video Examples

[Connecting Host Box to Sideline Box using Fiber](#) - Link the visiting coach room to sideline using fiber

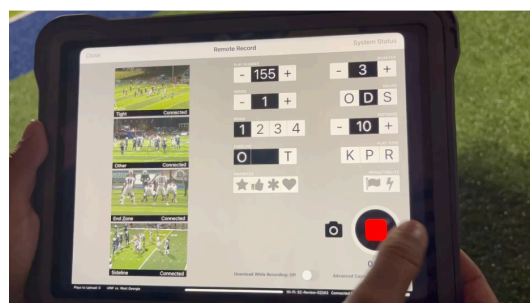
[Connecting the Host Box Router to Fiber Panel](#) - Link the visiting coach room to the visiting sideline using fiber to ethernet converter.

[Connecting the Sideline Box Switch to Fiber Panel](#) - Link the visiting sideline to the visiting coach room using fiber to ethernet converter.

[Connecting the RCK to Fiber](#) - Example of how to connect the RCK to fiber using fiber to SDI converter and the UpDownCross converter. This does not show the patch panel but explains how to connect the RCK via fiber.

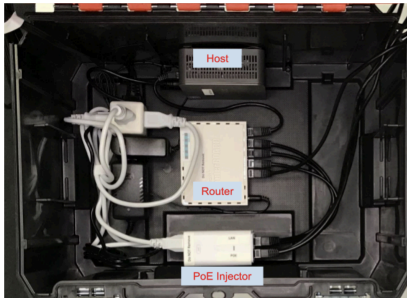
[Disconnect Fiber LC Connectors](#) - This video shows how to properly disconnect the LC fiber connectors

Clip in Coach Room

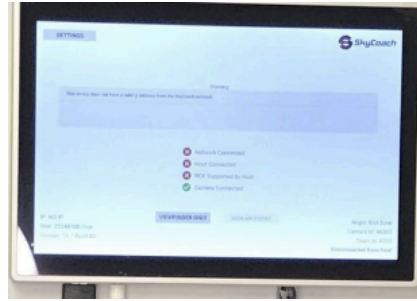


Parts Needed

1 X Host Box



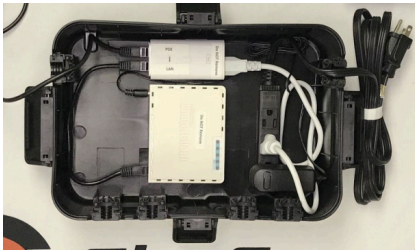
2 X RCKs



2 X Fiber to Ethernet Converters



1 X Coach Box



4 X Fiber to SDI Converters



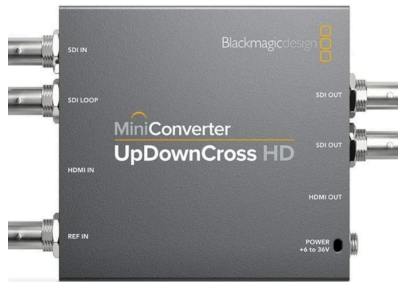
6 X Fiber LC to ST Jumpers



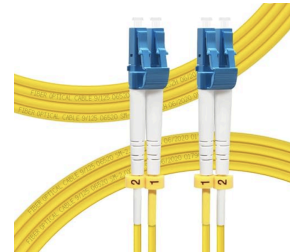
1 X Sideline Box



2 X UpDownCross Converters



6 X Fiber LC to Lc Jumpers



1 X Sideline Stand



4 X SDI Cables



2 X HDMI Cables



Several Power Strips

9 total plugs in the press box. Some plugs take more space than regular plugs. Must account for 1 host box, 1 coach box, 2 RCKs, 2 fiber to SDI converter, 2 UpDownCross converters, 1 fiber to ethernet converter

2 total plugs on the sideline. Sideline Box and fiber to ethernet converter

Extension Power Cables

On the sideline the power for the Sideline Box may be a good way from the optimal location for the Sideline Box box and antenna

100ft Ethernet Cables

Use the 100ft ethernet to connect the fiber to ethernet converter to the Sideline Box

Recommended USB C to Ethernet Adapters

The switches in the Sideline Box and in the Coach Box allow you to connect your iPads to the SkyCoach network via ethernet. This may be necessary in some of the larger environments.

Bring 6 LC and ST fiber jumpers. The school may be using one or the other. Best to have both scenarios covered.